



Laparoscopic One Anastomosis Gastric Bypass (LOAGB)

“ How I do it “

Concepts and Results in a series of 11-years
experience with 2,200 patients

Miguel-A. Carbajo Caballero

Director of the Center of Excellence of the Surgery of Obesity
and Metabolic Diseases.

Hospital Campo Grande, Valladolid, España

Minimising the Inter and Postoperative Risks of Gastric Bypass

Stenosis

Leak

Chronic Marginal
Ulcer

Bleeding

Severe Dumping

Regain or Failed
Weight Loss

Obstruction
Internal Hernia
Stenosis
Leak
Bleeding
Volvulus

Two Anastomosis GB
12 Possible Risk
Factors

Stenosis
Leak
Bleeding

Obstruction

Bilio – Pancreatic
Limb: 250 – 350 cms

Possible Alkaline Reflux???

One Anastomosis GB
4 Possibles Risk Factors

One Anastomosis Gastric Bypass by laparoscopy and robotic assistant



One Anastomosis Gastric Bypass by laparoscopy and robotic assistant

KEY STEPS OF THE PROCEDURE

1. INTESTINAL LOOP between 200 to 350 cm.

2. HISS ANGLE TOTALLY OPENED.

3. GASTRIC POUCH, 13 to 15 cm. Length, and 25-30 cc. Capacity (calibrated with a 36 French tube), and Radical dissection of the posterior gastric wall

4. ANTI-REFLUX MECHANISM, afferent loop suspended 8-10 cm to the gastric pouch.

5. GASTRO-ILEAL ANASTOMOSIS, 2 to 2.5 cm. width.

Laparoscopic One Anastomosis Gastric Bypass: 11-Year Experience in 2,200 patients

Patients Characteristics (June 2002 to February 2013)

Age		43 (12 - 74)
Gender	Female	1353 (61.5%)
	Male	847 (38.5%)
BMI		46 (31 - 86)
EBW (kg)		65 (28 - 220)

Laparoscopic One Anastomosis Gastric Bypass: 11 - Year Experience in 2,200 patients

Patients Characteristics

Primary Surgery	1271 (57.7%)
Previous Open Surgery	524 (23.8%)
Associated Procedures	360 (16.3%)
Previous Bariatric Procedures	45 (2.1%)

Laparoscopic One Anastomosis Gastric Bypass: 11 - Year Experience in 2,200 patients

Hospital stay

Hospital Stay	Uncomplicated patients	2.167 (98.50%) 1 day (15-120 h.)
	Major Complications	33 (1.50%) 9 days (4-32 d.)



Laparoscopic One Anastomosis Gastric Bypass: Our Experience in 2,200 patients

Late Complications

Gastro-intestinal stenosis 9 (0.40%)	Pneumatic Dilatation	7 (0.32%)
	Prosthesis	2 (0.09%)
Acute Anastomosis Ulcer 8 (0.36%)	Medical Treatment	8 (0.36%)
Malnutrition	Medical treatment	12 (0.55%)
Tiamina deficit	Medical treatment	1 (0.04%)
Revisional surgery	0 (0%)	0 (0 %)
TOTAL		30 (1.36%)

Laparoscopic One Anastomosis Gastric Bypass: Our Experience in 2,200 patients

Weight Loss

Percent of mean EWL at:	1 year	84% (55 -112%)
	2 year	88% (58 – 115%)
	3 year	81% (55 – 103%)
	4 year	79% (51 – 102%)
	5 year	77% (48 – 100%)
	10 year	70% (46 – 98%)



Laparoscopic One Anastomosis Gastric Bypass: Our Experience in 2,200 patients

Severe Comorbidities Resolution Index

Dyslipidemia	96 %
Type 2 Diabetes	92 %
Arterial Hipertension	90 %
Sleep Apnea	99 %

Laparoscopic One Anastomosis Gastric Bypass: 11 Year Experience in 2,200 patients

Postop. Endoscopic Studies at 5-Year Follow-Up

Postoperative UGI endoscopic (control) studies were planned for all patients completing at list 5-year follow-up.

1.090 patients completed at list 5-Year Follow-up

265 (24.5%), **accepted underwent** UGI endoscopic studies

Results: NO significant acute or chronic lesions were found:

- . Endoscopic findings not shown *chronic marginal ulcer, erosive esophagitis, or severe alkaline reflux.*
- . *Minor or middle sign of pouch gastritis were found in 21 patients (7.9%)*
- . *H. Pylory was diagnosis in 9 patients (3.4%)*

UGI: upper gastrointestinal

Laparoscopic One Anastomosis Gastric Bypass (LOAGB) vs. Standard Roux-en Y Gastric Bypass (SRYGB)

IFSO- European Database Control

(Since January 2010)



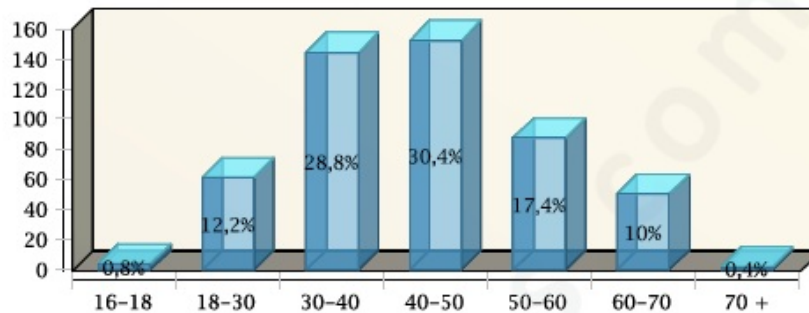
EAC-BS



EAC-BS

Primary Charts

Age distribution

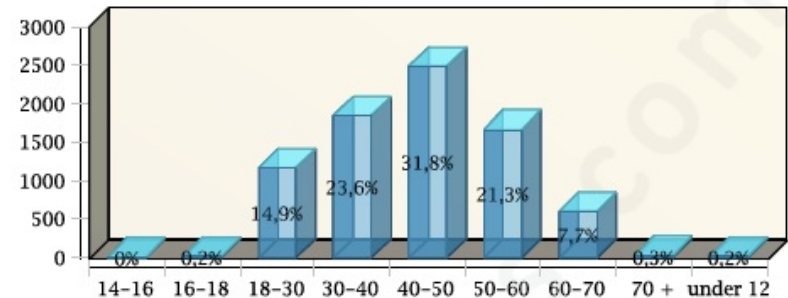


TOTAL OPERATIONS 500

LOAGB

Primary Charts of Gastric By Pass

Age distribution



TOTAL OPERATIONS 7200

SRYGB (All Types)

Laparoscopic One Anastomosis Gastric Bypass (LOAGB) vs. Standard Roux-en Y Gastric Bypass (SRYGB)

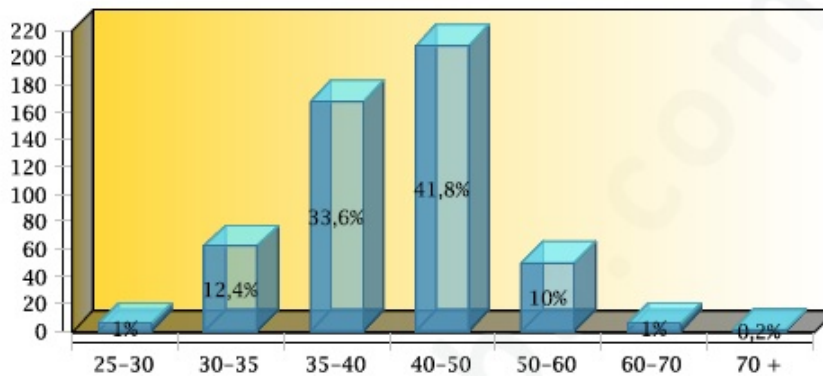
IFSO- European Database Control (Since January 2010)



EAC-BS

Primary Charts

BMI distribution



TOTAL OPERATIONS 500

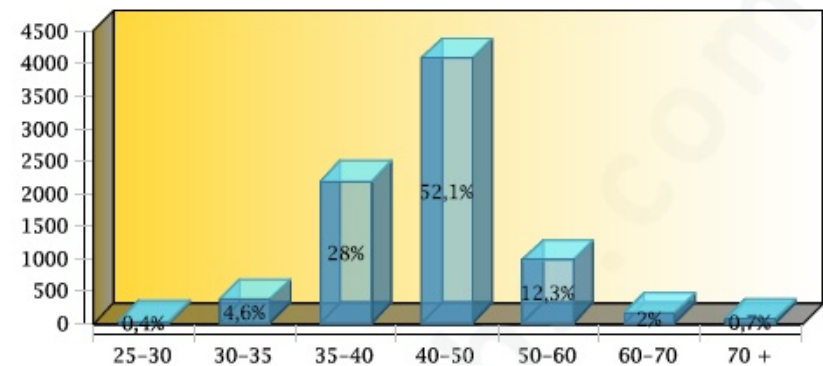
LOAGB



EAC-BS

Primary Charts of Gastric By Pass

BMI distribution



TOTAL OPERATIONS 7200

SRYGB (All Types)

Laparoscopic One Anastomosis Gastric Bypass (LOAGB) vs. Standard Roux-en Y Gastric Bypass (SRYGB)

IFSO- European Database Control
 (Since January 2010)



EAC-BS

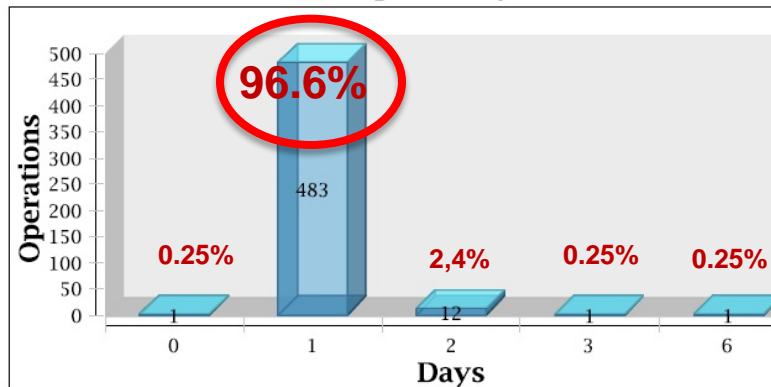


EAC-BS

Primary Charts

Primary Charts of Gastric By Pass

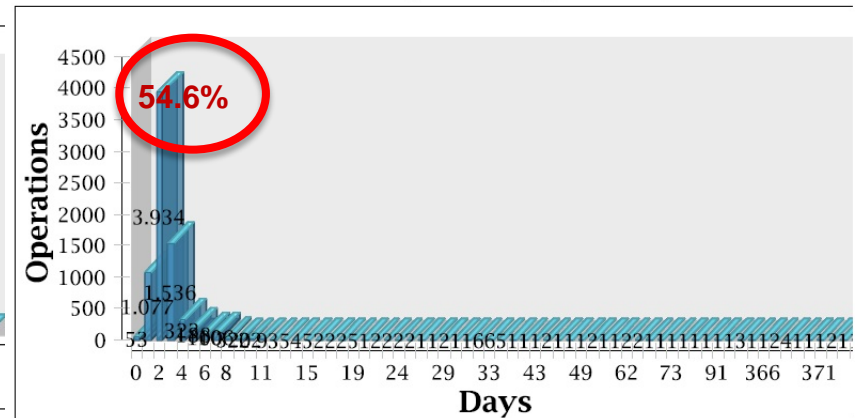
Hospital Stay



TOTAL OPERATIONS 500

LOAGB

Hospital Stay



TOTAL OPERATIONS 7200

SRYGB (All Types)

Laparoscopic One Anastomosis Gastric Bypass (LOAGB) vs. Standard Roux-en Y Gastric Bypass (SRYGB)

(Since January 2010)



EAC-BS

Primary Charts

0.2%

Operative Outcome complications

Complications	Total	Percentage
1 Bleeding	1	0.2%



EAC-BS

Primary Charts of Gastric By Pass

0.6%

Operative Outcome complications

Complications	Total	Percentage
1 Anastomotic Stricture	2	0.03%
2 Bleeding	19	0.24%
3 General Complications	4	0.05%
4 Intra abdominal abscess	1	0.01%
5 Leak	2	0.03%
6 Other Complications	10	0.13%
7 Vomiting	4	0.05%
8 Wound infection	2	0.03%

TOTAL OPERATIONS 500

LOAGB

TOTAL OPERATIONS 7200

SRYGB (All Types)

Laparoscopic One Anastomosis Gastric Bypass (LOAGB) vs. Standard Roux-en Y Gastric Bypass (SRYGB)

IFSO- European Database Control
(Since January 2010)



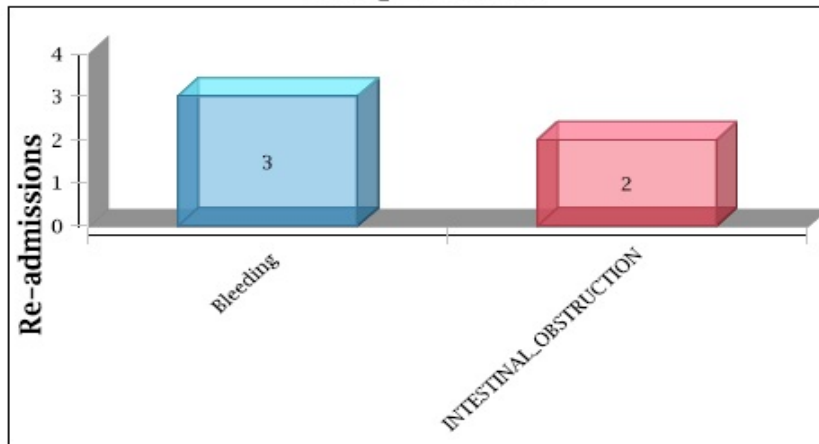
EAC-BS

Primary Charts

Re-admissions for early complications

1%

Complications



Total Complications: 5

TOTAL OPERATIONS 500

LOAGB



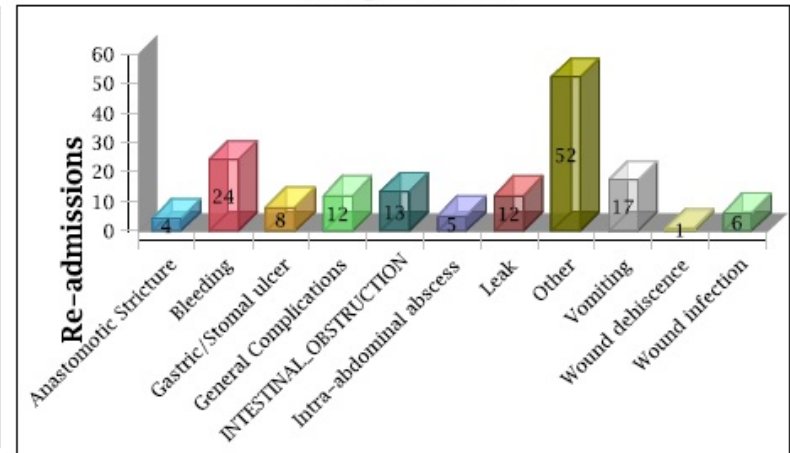
EAC-BS

Primary Charts

Re-admissions for early complications

2.1%

Complications



Total Complications: 154

TOTAL OPERATIONS 7200

SRYGB (All Types)

Laparoscopic One Anastomosis Gastric Bypass (LOAGB) vs. Standard Roux-en Y Gastric Bypass (SRYGB)

IFSO- European Database Control (Since January 2010)

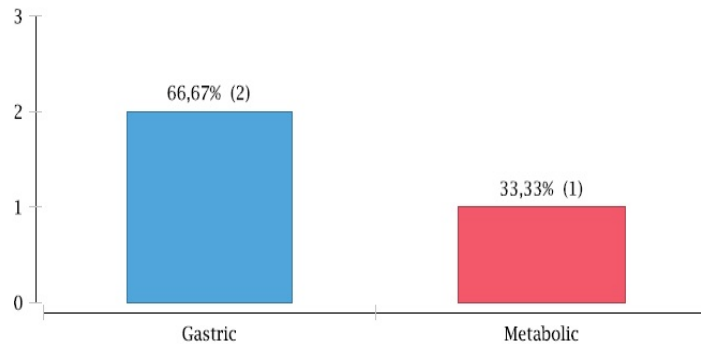


EAC-BS

0.6%

Primary Charts

Complications not requiring admission



TOTAL OPERATIONS 500

LOAGB

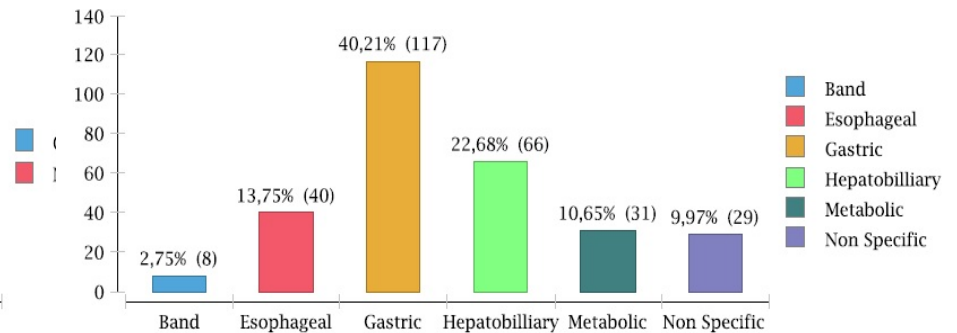


EAC-BS

4.0%

Primary Charts

Complications not requiring admission



TOTAL OPERATIONS 7200

SRYGB (All Types)

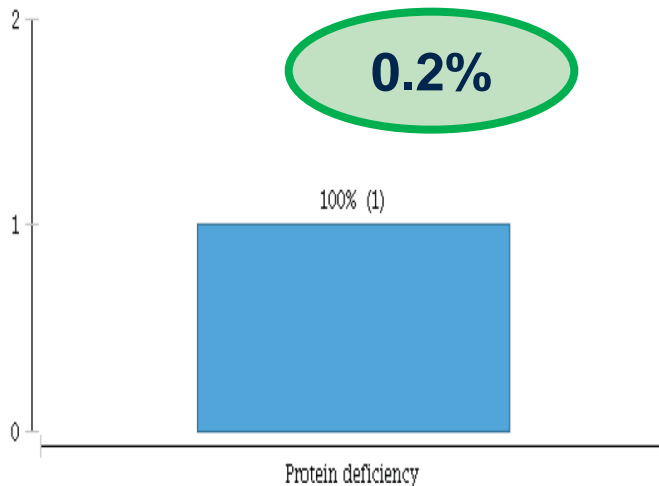
Laparoscopic One Anastomosis Gastric Bypass (LOAGB) vs. Standard Roux-en Y Gastric Bypass (SRYGB)

IFSO- European Database Control
(Since January 2010)



EAC-BS

Metabolic Complications



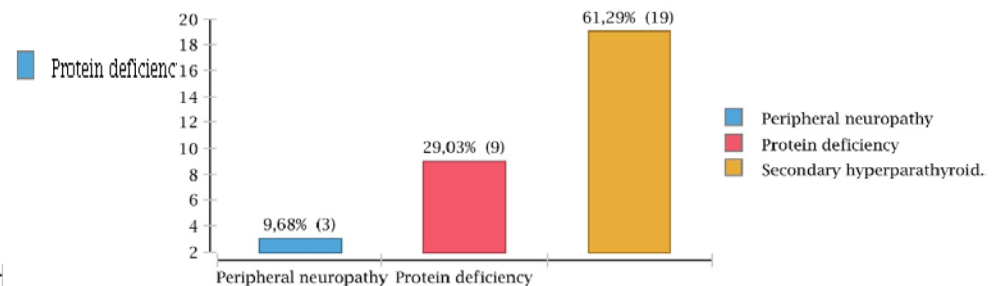
TOTAL OPERATIONS 500

LOAGB



EAC-BS

Metabolic Complications



TOTAL OPERATIONS 7200

SRYGB (All Types)

Laparoscopic One Anastomosis Gastric Bypass (LOAGB) vs. Standard Roux-en Y Gastric Bypass (SRYGB)

IFSO- European Database Control

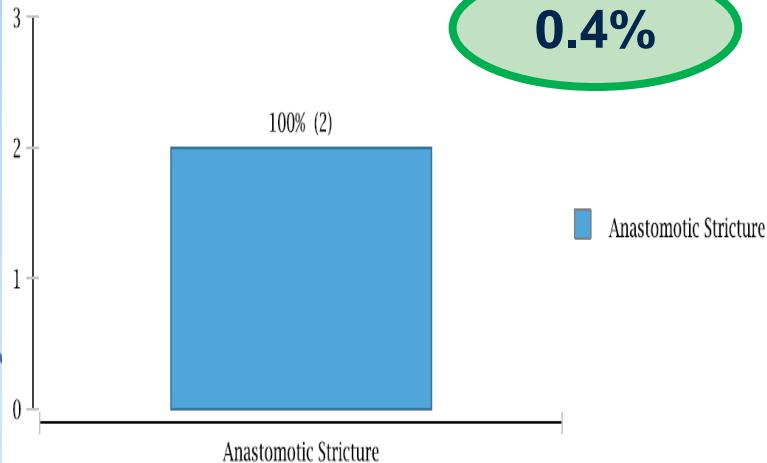
(Since January 2010)



EAC-BS

Gastric Complications

0.4%



TOTAL OPERATIONS 500

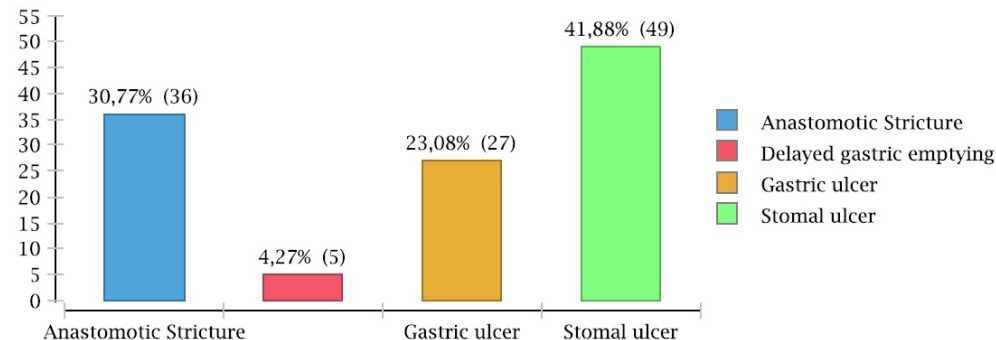
LOAGB



EAC-BS

Gastric Complications

1.62%



TOTAL OPERATIONS 7200

SRYGB (All Types)

Laparoscopic One Anastomosis Gastric Bypass (LOAGB) vs. Standard Roux-en Y Gastric Bypass (SRYGB)

IFSO- European Database Control
 (Since January 2010)



EAC-BS

Esophageal Complications

0% COMPLICATIONS

TOTAL OPERATIONS 500

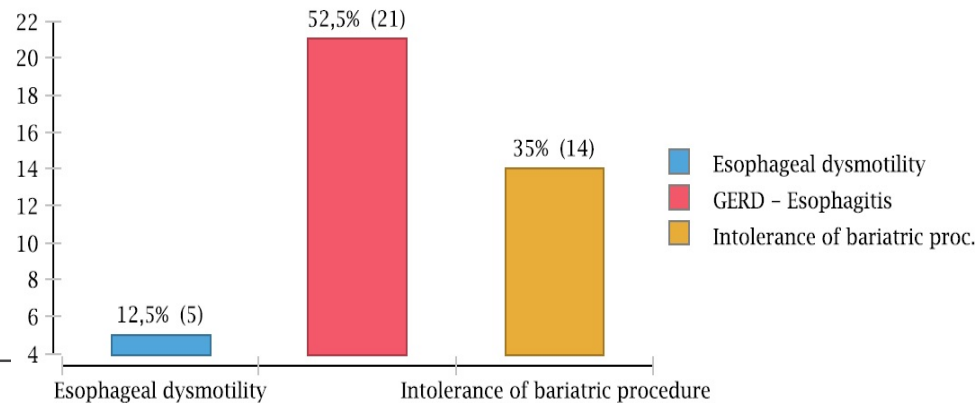
LOAGB



EAC-BS

0.55%

Esophageal Complications



TOTAL OPERATIONS 7200

SRYGB (All Types)

Laparoscopic One Anastomosis Gastric Bypass (LOAGB) vs. Standard Roux-en Y Gastric Bypass (SRYGB)

IFSO- European Database Control

(Since January 2010)



EAC-BS

Heparobilliary Complications

0% COMPLICATIONS

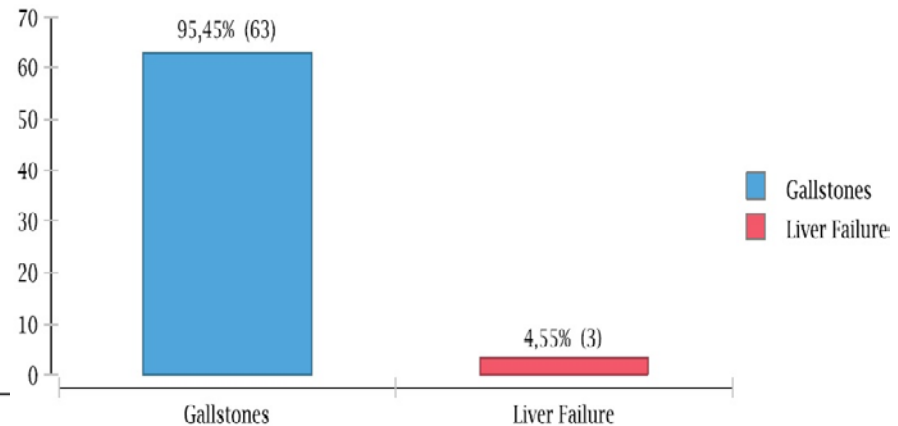
TOTAL OPERATIONS 500

LOAGB



EAC-BS

Heparobilliary Complications



0.91%

TOTAL OPERATIONS 7200

SRYGB (All Types)

Laparoscopic One Anastomosis Gastric Bypass (LOAGB) vs. Standard Roux-en Y Gastric Bypass (SRYGB)

IFSO- European Database Control

(Since January 2010)



EAC-BS

Re-admissions for late complications

Complications

0% COMPLICATIONS

TOTAL OPERATIONS 500

LOAGB



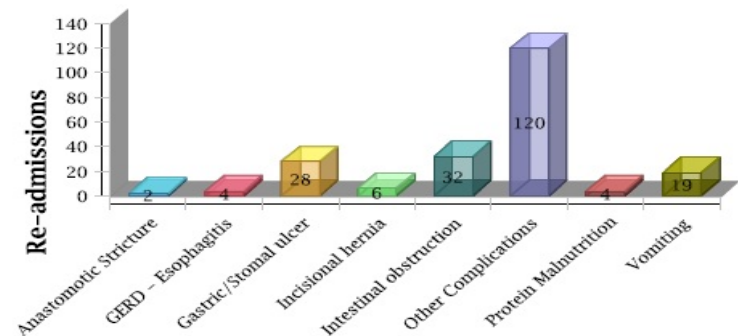
EAC-BS

Primary Charts

2.98%

Re-admissions for late complications

Complications



TOTAL OPERATIONS 7200

SRYGB (All Types)

Laparoscopic One Anastomosis Gastric Bypass (LOAGB)

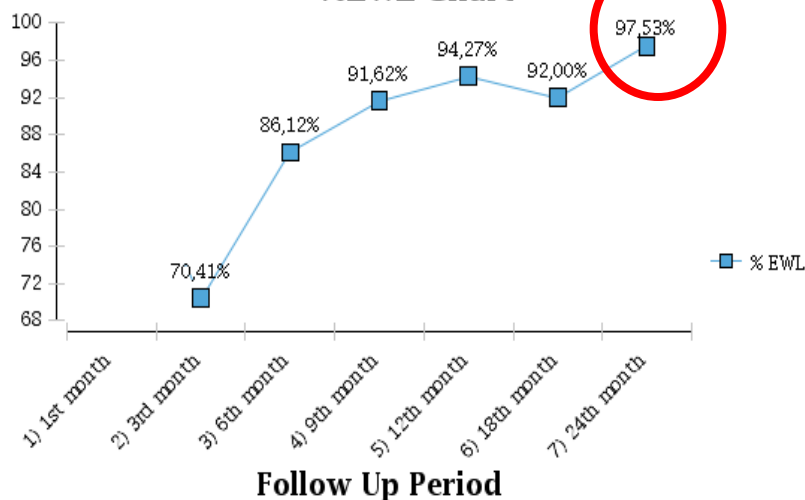
IFSO- European Database Control

(Since January 2010)



EAC-BS

%EWL Chart



TOTAL OPERATIONS 500

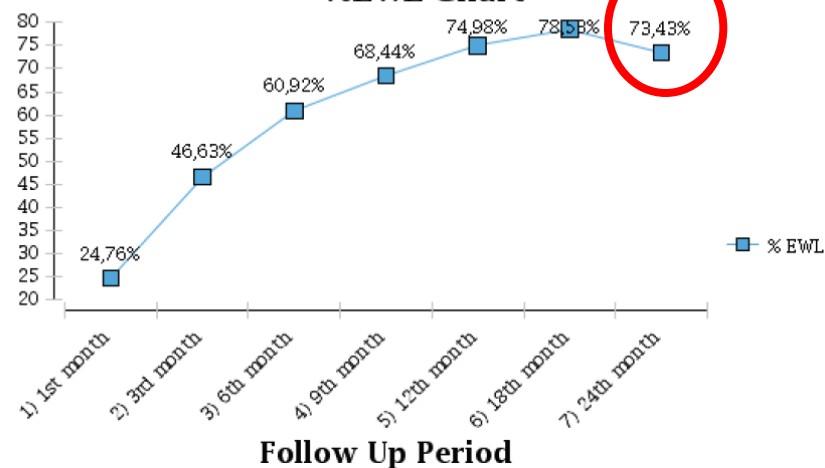
LOAGB



EAC-BS

Primary Charts

%EWL Chart



TOTAL OPERATIONS 7200

SRYGB (All Types)

Laparoscopic One Anastomosis Gastric Bypass (LOAGB)

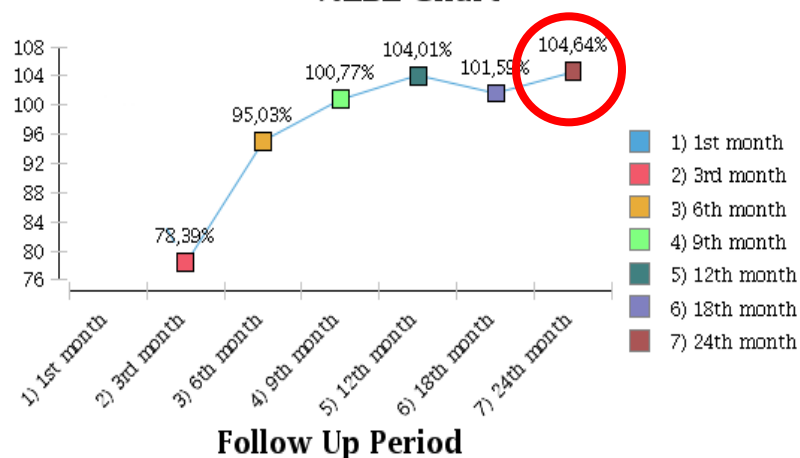
IFSO- European Database Control

(Since January 2010)



EAC-BS

%EBL Chart



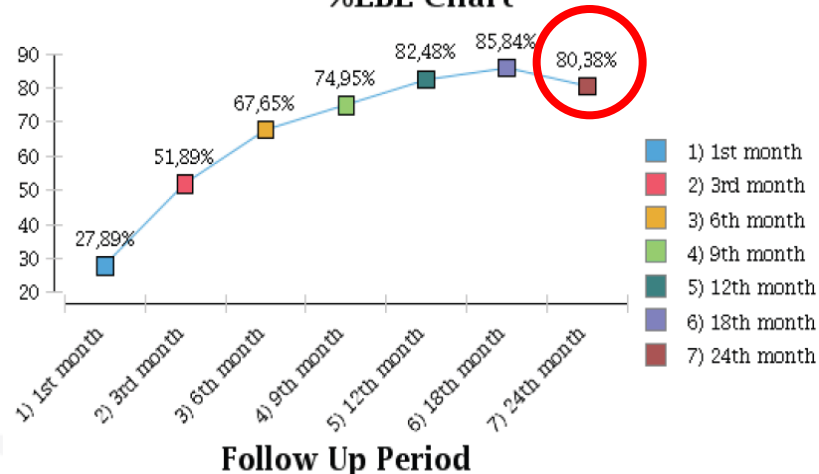
TOTAL OPERATIONS 500

LOAGB



EAC-BS

%EBL Chart



TOTAL OPERATIONS 7200

SRYGB (All Types)

Laparoscopic One Anastomosis Gastric Bypass (LOAGB)

CONCLUSIONS

1. The **LOAGB** technique in our experience reduces the difficulty, operative time and length of hospital stay compared to other complex techniques; **it also substantially decreases both early and late complication rates.**

Laparoscopic One Anastomosis Gastric Bypass (LOAGB)

CONCLUSIONS

2. The excellent results in our Long- time experience in regards to EWL, EBL, resolution of co-morbidities and quality of life (QOL) make **LOAGB** a **safe and effective technique, and a powerful alternative** for the treatment of morbid and super-morbid obesity after a 11-year experience.



CENTER OF EXCELLENCE FOR THE STUDY AND OBESITY SURGERY TREATMENT

